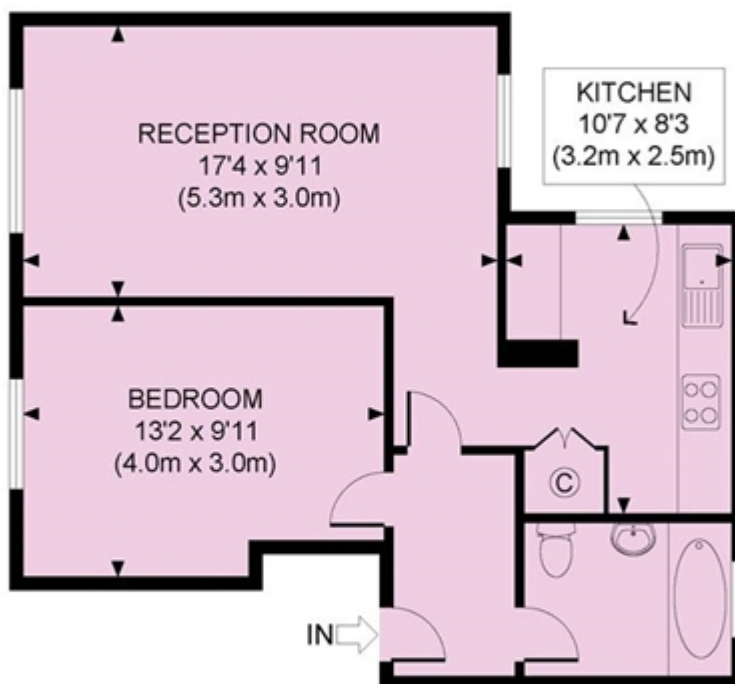


Harrow Road, College Park

£1,300 PCM



HARROW ROAD, NW10
TOTAL APPROX. FLOOR AREA 492 SQ. FT. (45.7 SQ. M.)
THIRD FLOOR



All measurements walls, doors, windows, fitting and their appliances, their size and locations are shown conventionally and are approximate only and cannot be regarded as being a representation either by the seller or his agent nor Zentuvo
www.zentuvo.co.uk