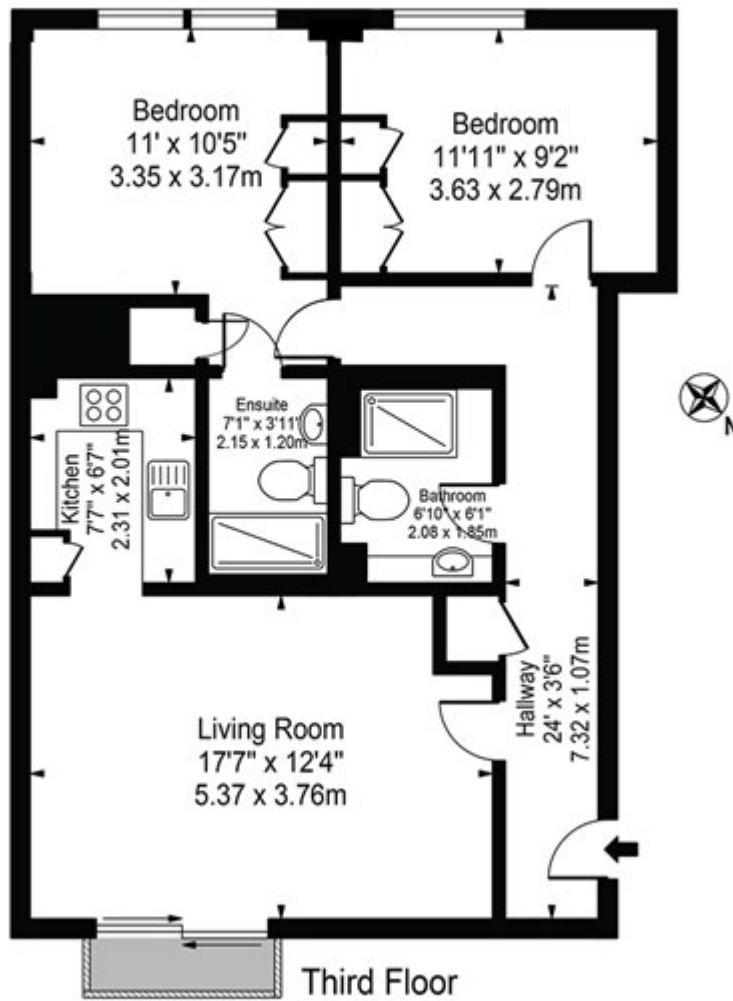


High Timber Street, London

£575 PW

Globe View,
Upper Thames Street, EC4V 3PQ
Approx. Gross Internal Area 706 Sq Ft - 65 Sq M



Third Floor
For Illustration Purposes Only - Not To Scale

This floor plan should be used as a general outline for guidance only and does not constitute in whole or in part an offer or contract.
Any intending purchaser or lessee should satisfy themselves by inspection, searches, enquiries and full survey as to the correctness of each statement.
Any areas, measurements or distances quoted are approximate and should not be used to value a property or be the basis of any sale or let.